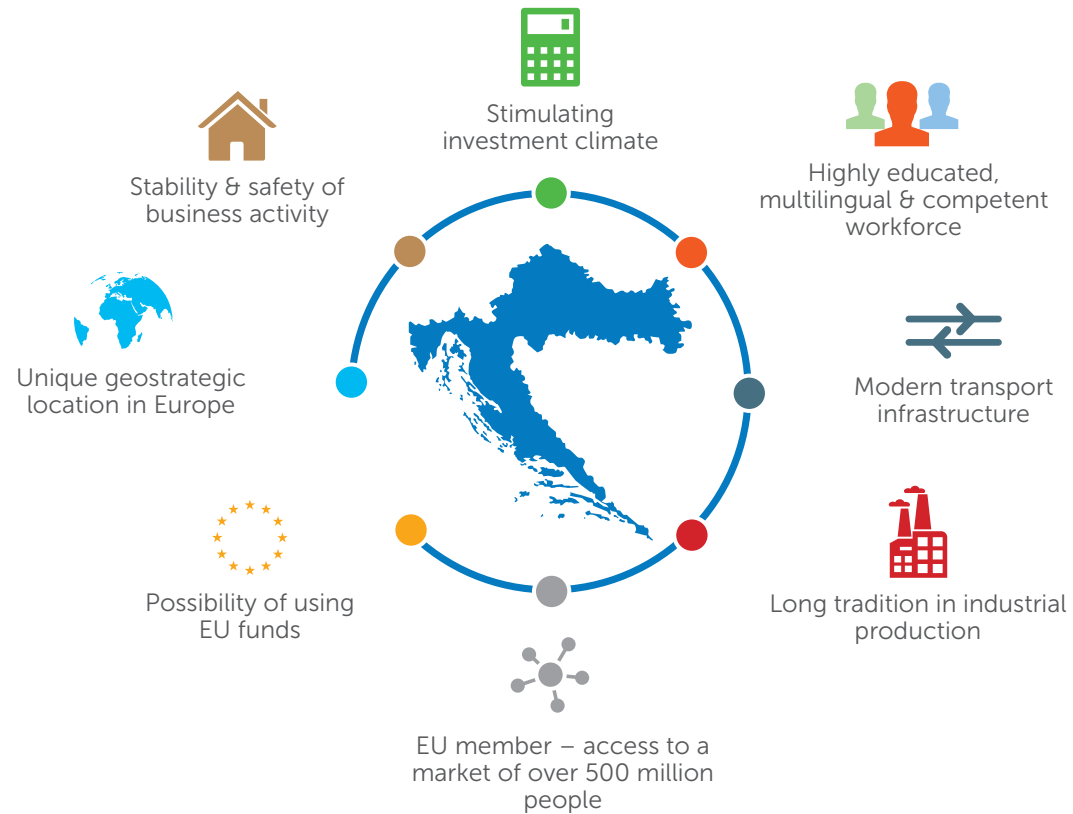


CROATIA – YOUR RELIABLE BUSINESS PARTNER:



STIMULATING INVESTMENT ENVIRONMENT:

- ❑ Tax incentives: reduction of profit tax to 10-0%; regular profit tax: 20%
- ❑ Employment grants: up to 9,000 EUR for newly employed
- ❑ Incentives for capital expenses and labour intensive investment projects – increase of support for opening new workplaces up to 100%
- ❑ Additional incentives for development-innovation activities, business support activities and high added value services
- ❑ Education grants: coverage of up to 70% of education costs



Croatian Metal Processing Industry

Tradition. Quality. Excellence.

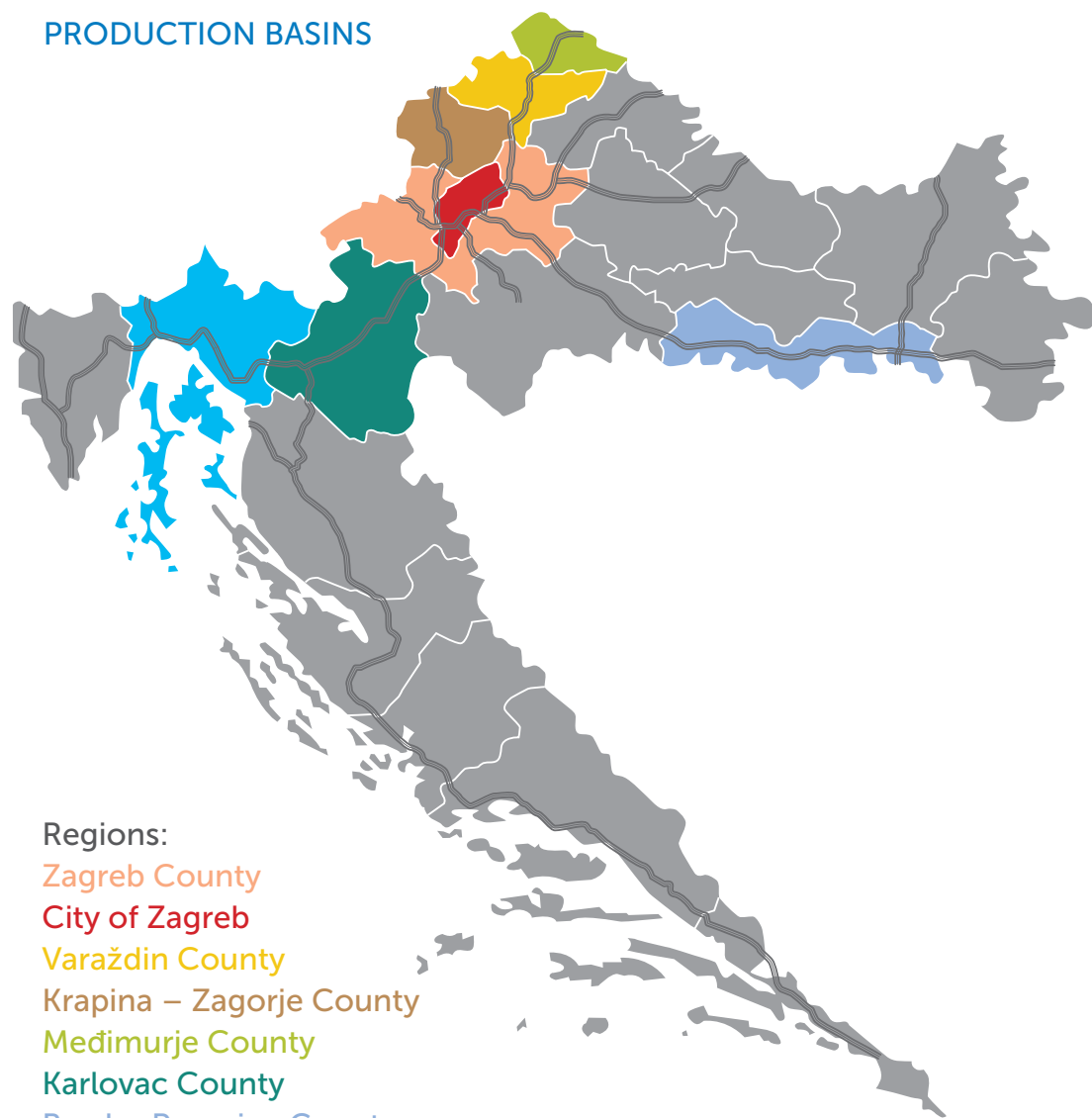


Croatian Chamber of Economy
International and EU Affairs Sector
Investment Promotion Division
Tel: +385 1 4828 382, Fax: +385 1 4828 379
Rooseveltov trg 2, 10000 Zagreb, Croatia
investicije@hgk.hr
www.investincroatia.hr, www.hgk.hr



- Highly skilled and educated workforce
- Long tradition in metal manufacturing
- Continuous investment in new technologies and production improvement
- High-quality products - competitive prices
- Reliable and quality supply chain on the spot

PRODUCTION BASINS



Regions:

- Zagreb County
- City of Zagreb
- Varaždin County
- Krapina – Zagorje County
- Međimurje County
- Karlovac County
- Brod – Posavina County
- Primorje – Gorski kotar County

METAL INDUSTRY IN NUMBERS:

€ 2.3 billion
income (5.2% of Croatia's GDP)

46.3%
of total income from export


2,771
registered companies

Almost
30,000
employees

€ 872 – 1,056 €
average gross monthly salary

MOST IMPORTANT METAL PRODUCTS:

 Ships, floating structures

 Metal constructions

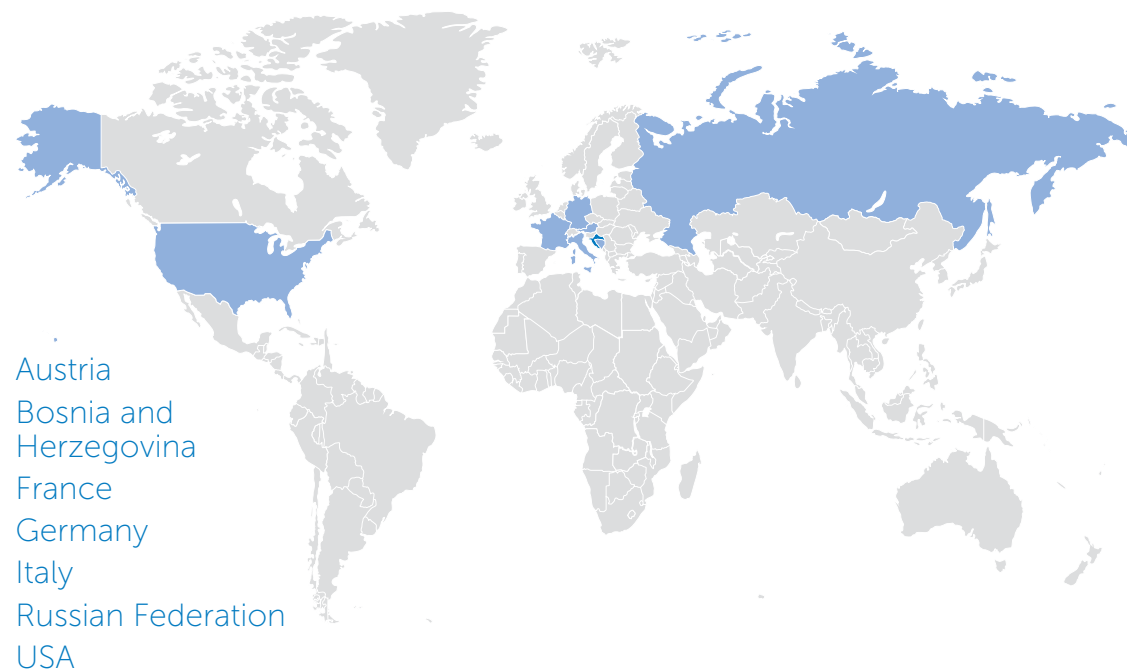
 Screws and bolts

 Energy processing equipment

 Tools

 Special purpose equipment

MOST IMPORTANT EXPORT MARKETS:



Data sources: Croatian Bureau of Statistics, Eurostat, Financial Agency (FINA)